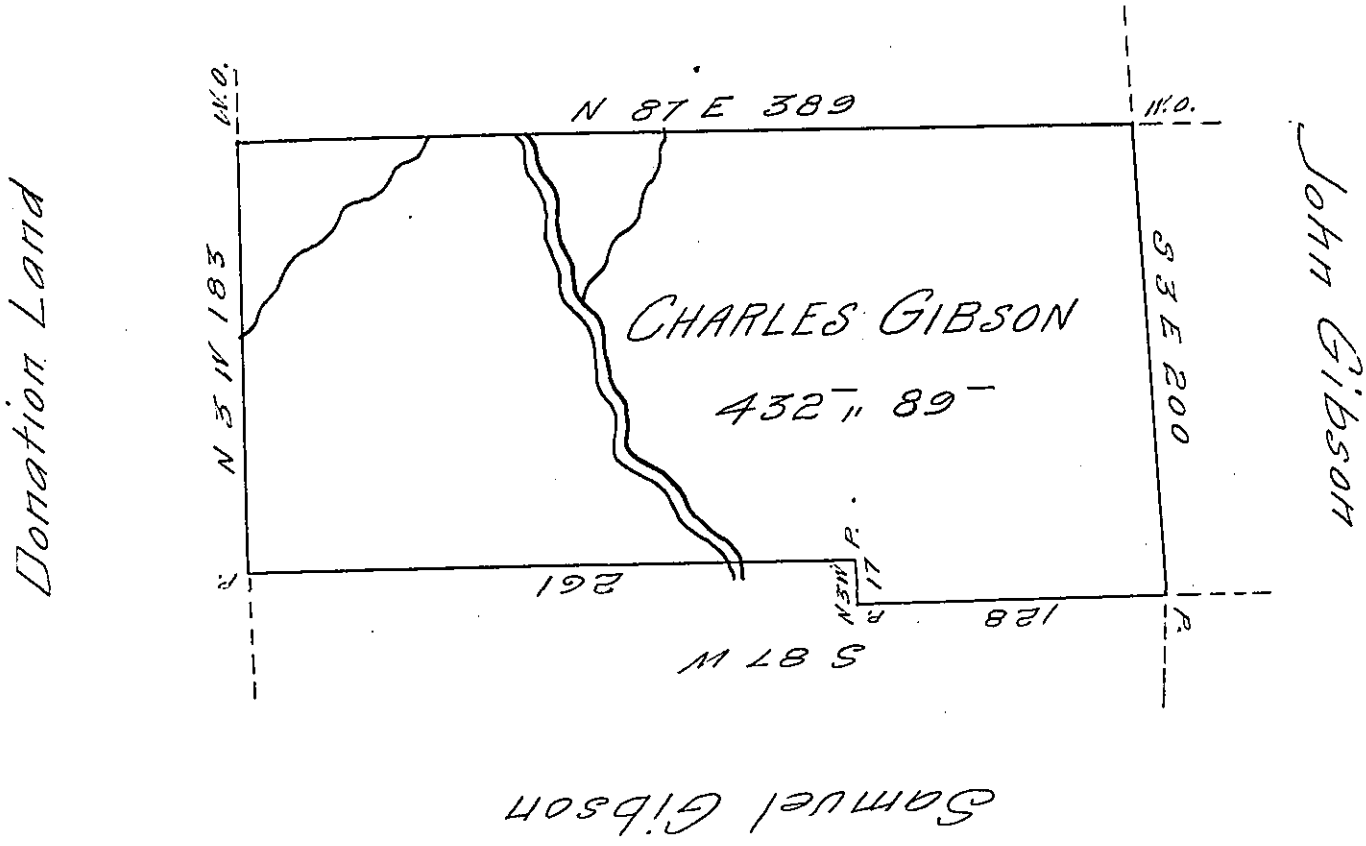


George Gibson



Situate on Sandy Creek in District No. 3
 Allegany County containing four hundred
 thirty two acres, eighty nine perches and al-
 lowance; Survey'd 11 June 1800 on actual Set-
 tlement made by Charles Gibson 10 April 1797.

Ben Stokely D.S.

 Surveyor General
 of
 Pennsylvania

IN TESTIMONY that the above is a copy of the original remaining on file in
 the Department of Internal Affairs of Pennsylvania, made
 conformably to an Act of Assembly approved the 16th day of
 February, 1833, I have hereunto set my Hand and caused
 the Seal of said Department to be affixed at Harrisburg,
 this thirty-first day of August 1906

Isaac R. Brown
 Secretary of Internal Affairs.